

## TAC - EVAPORATIVE COOLER MOTOR

TECO AUSTRALIA PTY LTD has been acknowledged for many years as a supplier of high quality, efficient and reliable electric motors to industry.

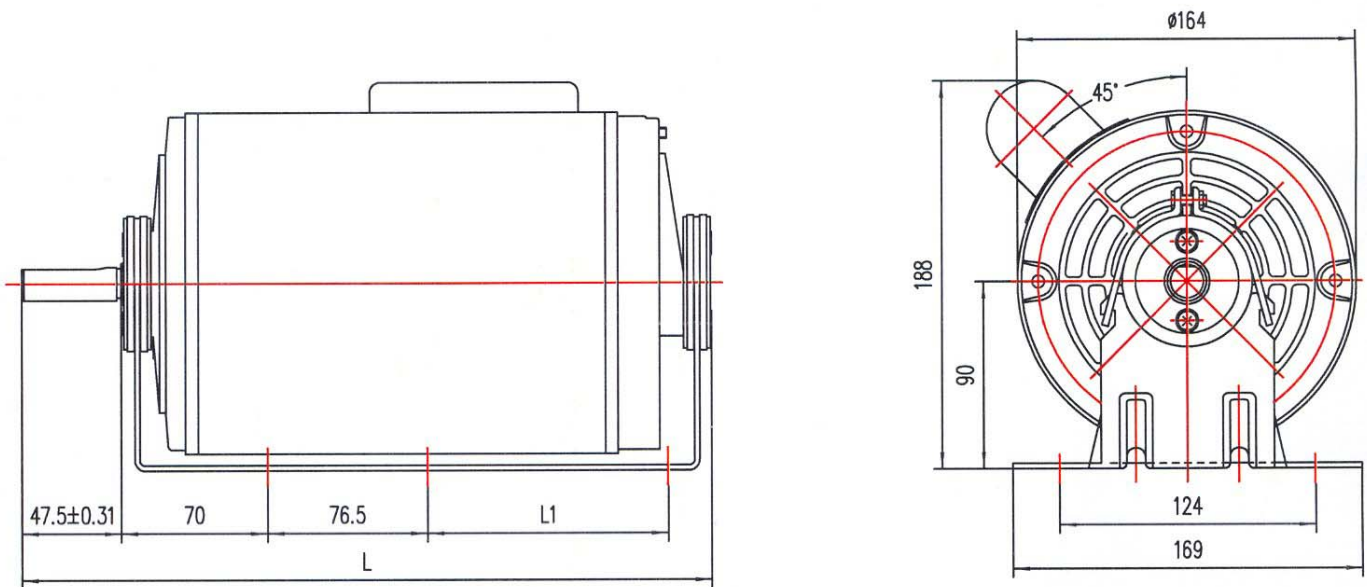
The EVAPORATIVE COOLER motor has been produced to raise the market standard in quality and performance. All motors are manufactured to current AUSTRALIAN electrical and mechanical standards and are subject to stringent quality control to ensure the user of a high degree of reliability, backed by a full 12 month warranty.



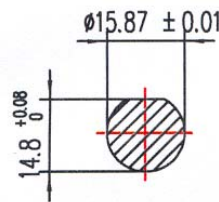
### FEATURES:-

- Heavy duty rolled steel shell frame
- Pressed metal capacitor cover
- Excellent protective paint finish
- Drip proof fan cooled IP22
- Resilient B56 Foot Mounted
- Dynamically balanced rotor
- Heavy duty bearings
- 5/8" drive end shaft DIA with flat
- Belt drive application
- Pre wired with four core flex for connection to the evaporative cooler Unit, lead length 500mm
- Able to withstand temporary voltage drop when starting
- Single phase 240 Volt 50 Hz
- Continuous Rated, Duty S1
- Two Speed, Centrifugal Fan Duty
  - 4 pole 1420 RPM
  - 6 pole 950 RPM
- Two motor sizes available -
  - 1) 550 / 180 Watts, 4 / 6 pole
  - 2) 750 / 250 Watts, 4 / 6 pole
- Low full load currents
- Good starting torque
- Auto re-set thermal overload protection
- Bi-directional rotation
- Capacitor Start, Induction Run winding configuration with high quality capacitor

## OUTLINE DIMENSIONS



## SHAFT DETAIL



| TECO Part Number         | 108/EVAC0.55-4/6 |      | 108/EVAC0.75-4/6 |      |
|--------------------------|------------------|------|------------------|------|
|                          | Output KW        | 0.55 | 0.18             | 0.75 |
| Supply Voltage / Hz      | 240 / 50         |      | 240 / 50         |      |
| Full Load Current (Amps) | 5.62             | 2.63 | 7.62             | 3.72 |
| Efficiency (%)           | 58               | 47.4 | 58               | 47.9 |
| Power Factor (p.u.)      | 70.8             | 60.2 | 70.7             | 58.5 |
| Full Load Speed (R.P.M.) | 1423             | 951  | 1421             | 949  |
| Dimension L (mm)         | 351              |      | 331              |      |
| Dimension L1 (mm)        | 131.5            |      | 111.5            |      |
| Net Weight (kg)          | 15               |      | 18               |      |

### TECO Australia Pty. Ltd.

Head Office: 335-337 Woodpark Road, Smithfield, NSW 2164  
 Brisbane Office: 50 Murdoch Circuit, Acacia Ridge, QLD 4110  
 Melbourne Office: 16 Longstaff Road, Bayswater, VIC 3153  
 Perth Office: 28 Belgravia Street, Belmont, WA 6104

Ph: (02) 9765 8118 Fax: (02) 9604 9330  
 Ph: (07) 3373 9600 Fax: (07) 3373 9699  
 Ph: (03) 9720 4411 Fax: (03) 9720 5355  
 Ph: (08) 9479 4879 Fax: (08) 9478 3876

### TECO New Zealand Ltd.

Unit 3, 477 Great South Road, Penrose, Auckland

Ph:(64) 9 526 8480 Fax:(64) 9 526 8484

Distributed by -

